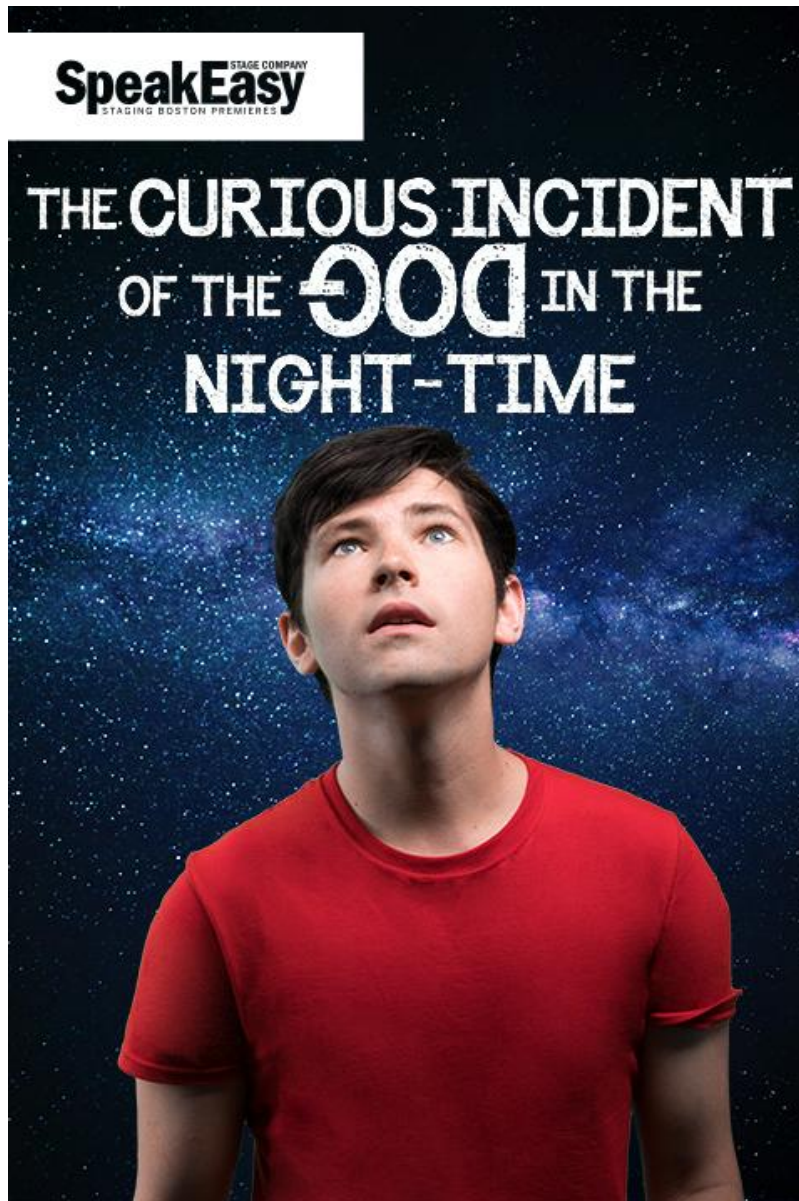


SpeakEasy Stage Company

Social Story



Sensory Friendly Performance

Sunday, November 19th @ 3:00 PM

For a list of parking and transportation options,
please visit

<http://www.speakeasystage.com/visit/parking/>



When you arrive at the theatre, you will enter through these glass doors.



You can pick up tickets at the Box Office just inside the glass doors. Be sure to tell the box office staff that you are seeing *Curious Incident*. The box office staff will speak to you through a microphone. There may be a line when you arrive.



You can enter the lobby to the right of the Box Office, through another set of glass doors.



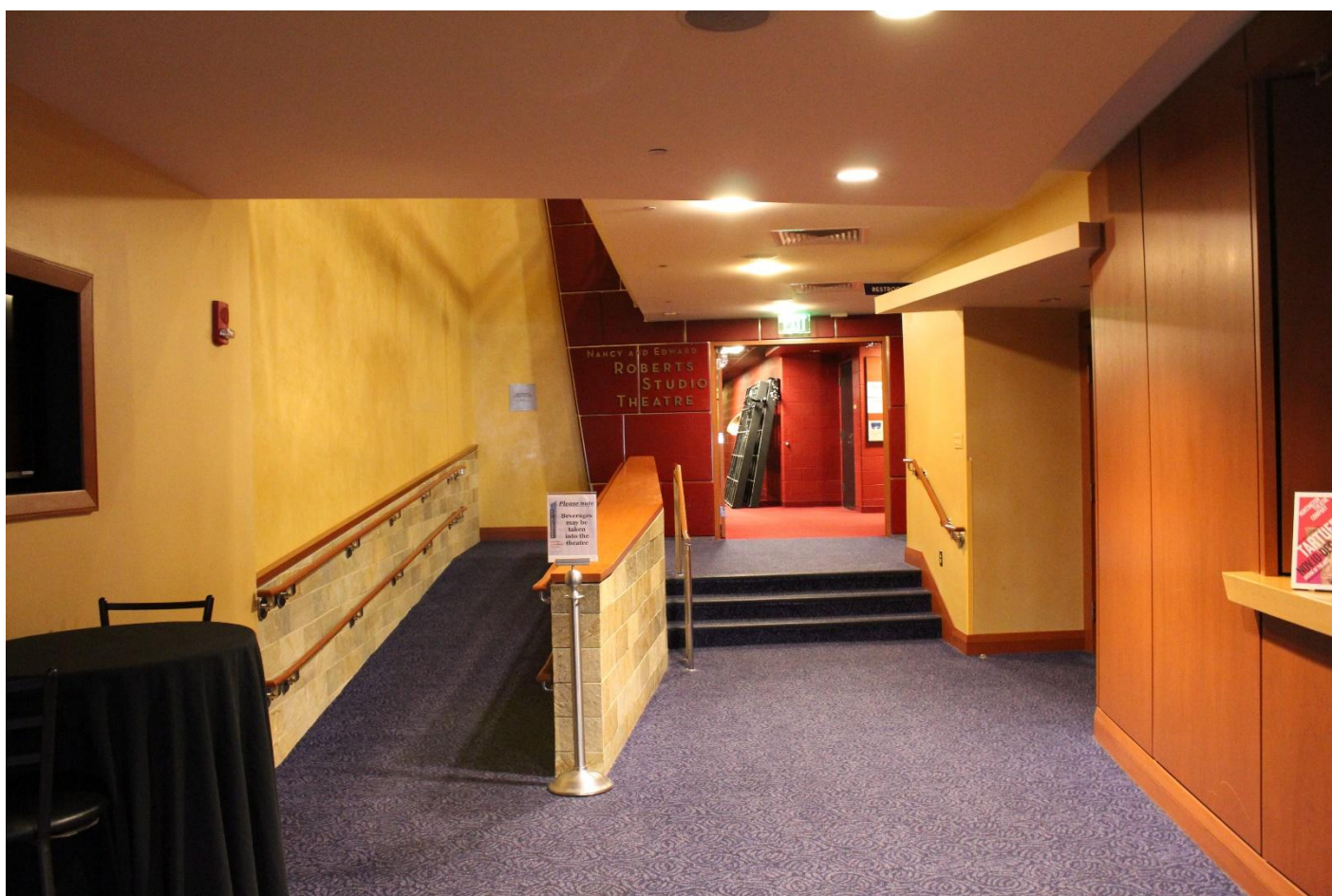
When you go into the lobby, an usher will scan your ticket. The scanner will beep when your ticket is scanned.



There is a bar where you can purchase food or drink. If you want to drop off your coat or request a fidget or ear plugs, they will be at Coat Check across from the bar.



You can use either the ramp or small staircase to enter the theater.



There are restrooms and water fountains in the lower lobby and on the second floor, before you reach the door to the theatre.



When it's time to enter the theater, an usher will be there to give you a program and help you find your seat.



Once the show begins, actors will perform in
the same space as you.



Watch Christopher solve the mystery of who killed Wellington, the dog.



Watch Christopher's journey to London from his hometown of Swindon.



Look out for actors walking in the aisles.
They might be near you during the show.



Watch out for fighting. Remember that all of these
things are not real. The fighting is pretend.



Listen for sounds between scenes and train noises –some of them will be loud!



If you get scared or uncomfortable during the show, you can go to Martin Hall to relax in a quiet room. Ushers will be available to help you find it. When and if you are ready to return to your seat, an usher will help you back into the audience.



Halfway through the play, we will have a fifteen minute break to stretch, use the restroom, or get a snack from the bar.

After, you can go back to your seat for the rest of the show.

Please do not sit or stand on the stage.



When the play is over, you can clap with the rest of the audience to thank the performers. It might be crowded when the audience starts to leave.

You are welcome to wait in the audience until it isn't as crowded.



We hope you have a wonderful experience with
SpeakEasy Stage Company!



SpeakEasy Stage Company - 539 Tremont Street, Boston, MA 02116
Office: 617-482-3279 Box Office: 617-933-8600 www.speakeasystage.com